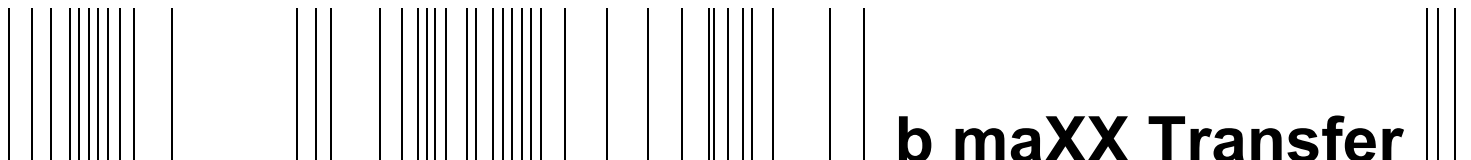


be in motion be in motion



b maXX Transfer

Manual

E

5.06026.01



Title	Manual
Product	b maXX Transfer
Last Revision:	01 March 2007
Copyright	<p>Owners may make as many copies as they like of this Manual exclusively for their own internal use. You are not allowed to copy or duplicate even extracts from this Manual for any other purposes.</p> <p>You are not permitted to exploit or communicate the contents of this Manual.</p> <p>Any other designations or company logos used in this Manual may be trademarks whose use by third parties for their own purposes may affect the rights of the owner of the trademark.</p>
Binding nature	<p>This Manual is a part of the unit/machine. This Manual must always be available to operators and be legible. If the unit/machine is sold, the owner must pass on this Manual together with the unit/machine.</p> <p>After selling the unit/machine you must pass on this original and all the copies that you made to the purchaser. After disposing of the machine in any way, you must destroy this original and all the copies that you made.</p> <p>When you pass on this Manual, all earlier revisions of the corresponding Manual are invalidated.</p> <p>Note that all the data/numbers/information that are quoted are current values at the time of printing. This information is not legally binding for dimensioning, calculation and costing.</p> <p>Within the scope of further-development of our products, Baumüller Nürnberg GmbH reserve the right to change the technical data and handling.</p> <p>We cannot guarantee this Manual is completely error-free unless this is expressly indicated in our General Conditions of Business and Delivery.</p>
Manufacturer	<p>Baumüller Nürnberg GmbH Ostendstr. 80 - 90 90482 Nuremberg Germany Tel. +49 9 11 54 32 - 0 Fax: +49 9 11 54 32 - 1 30 www.baumueller.de</p>



Table of Contents

1	Introduction	5
2	Functionalities and Use	7
2.1	Establish a connection	7
2.2	'Identification' tab	8
2.3	'Drive Parameter Set' tab	8
2.4	Comparison of b maXX drive controller parameter sets (BPD files)	13
2.5	'PLC Bootproject' tab	15
2.6	'PLC Bootproject' tab - optional additions	16
2.7	'Details' option	20
2.8	'Transfer List' tab	21
3	Configuration	25
3.1	Explanation of INI file entries	27
4	b maXX Transfer Versions	31



TABLE OF CONTENTS

1

INTRODUCTION

The software tool 'b maXX Transfer' allows previously prepared b maXX parameter sets and SPS programs to be transferred to b maXX devices (b maXX drive PLC, controller PLC, b maXX 4400, b maXX 3400, b maXX 2300) without requirement of the significantly larger program packages 'PROPROG wt II' or 'WinBASS II'.

It works under the Microsoft operating systems Win2000 and Win XP.

'b maXX Transfer' is small enough to allow it e. g. to be sent together with the data per e-mail.

It requires no installation and can e. g. simply be sent as a zip archive. It can be used immediately after extraction to a separate folder.

Individual adaptation is possible by means of an INI file that can be edited in many ways.

These 'short instructions' are intended for the person compiling the data sets and programs for utilization in e. g. Production or Service, preparing procedures and configuring 'b maXX Transfer' for this purpose.

The user should be familiar with programming of b maXX PLC and/or parametrization of b maXX drives (with the help of WinBASS II) and the basic procedures and concepts involved.

It is recommended to draw up specific directions, e. g. for the 'on-site service engineer', specifying the exact sequence of steps and actions required for the particular application.



2

FUNCTIONALITIES AND USE

The program and data are generally transferred as zip archives and extracted to a separate directory of a PC or laptop with a connection (serial RS-232, TCP/IP, etc) to the b maXX device. Installation is not required.

It is also possible to set up a configuration that can be run from a CD-ROM.

A double click on the 'bmaXXTransfer.exe' symbol starts the program. The following window is displayed:

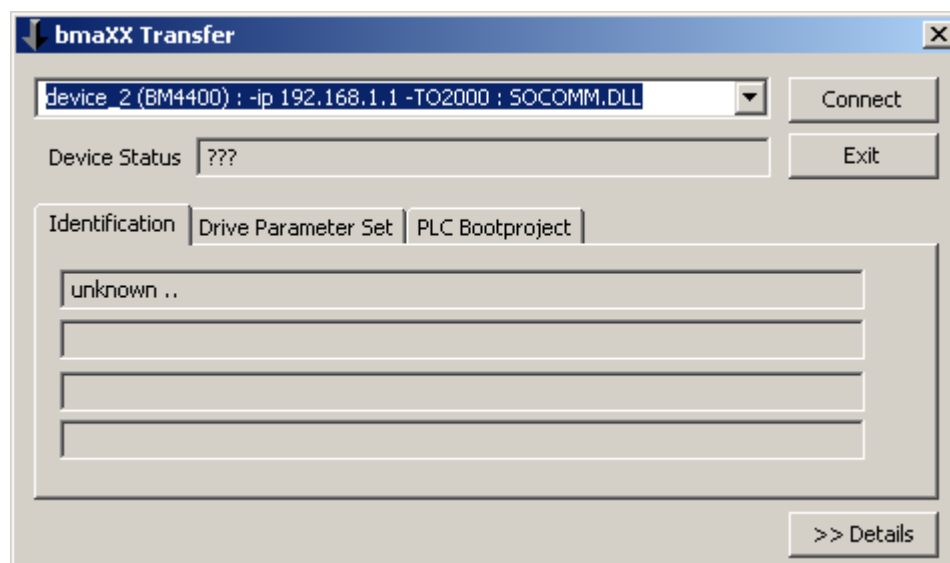


Figure 1: Start screen

2.1 Establish a connection

The device or the communication path to the device must first be selected in the upper section of the combo box. This may also be entered directly.

Click 'Connect'.

Check the 'Device Status' information provided.

The connection is operative as long as the counter in 'Device Status' is incremented.

2.2 'Identification' tab

The connected b maXX device is identified immediately after connection is made. The results are shown in the 'Identification' tab.

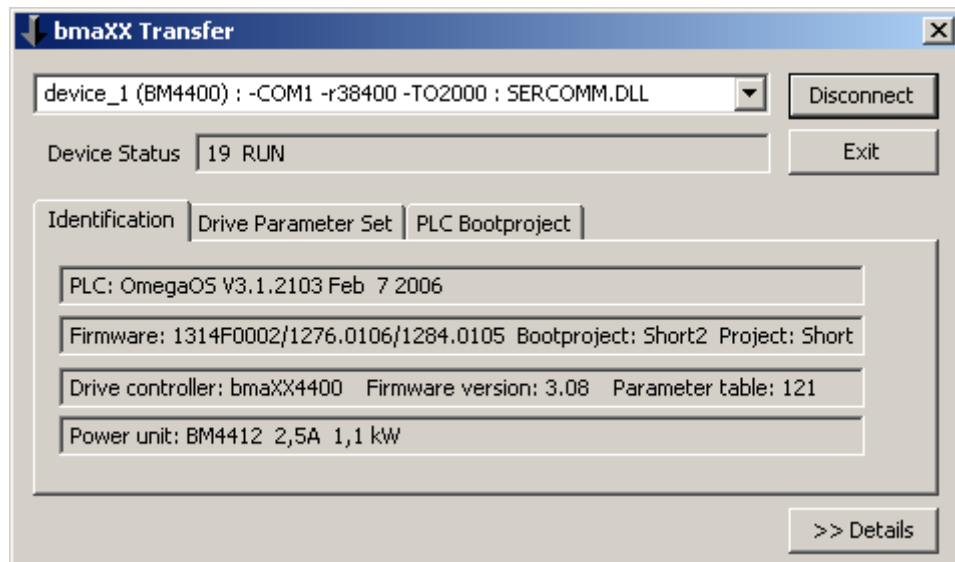


Figure 2: 'Identification' tab

Information about the type and version of the PLC, your firmware, the drive controller and the power unit is provided in these four lines.

2.3 'Drive Parameter Set' tab

This screen allows drive controller parameter sets to be saved in the device (Download) and (optionally) the drive controller parameters to be recorded in a file (Upload). This requires the parameter definition file (*.BPX file) compatible with the particular drive controller version. These BPX files are supplied e. g. with WinBASS II.

The BPX file also defines the scope of the transferred data. Subsets can be defined by deleting parameters that are not required. The drive controller parameter values are saved in BPD files (see lower section of combo box).

The combo box presetting can be specified in the INI file (see [>Configuration<](#) from page 25 for further options). For safety reasons, it is normally required that a BPD file for downloading to the device has been created on a device with the same controller version.

Parameters are first downloaded to the RAM, followed by transfer of all parameters to the EEPROM. The saving option can be prevented by an appropriate entry in the INI file. This would result in the downloaded parameter settings being lost once the device is switched off.

Download to drive controller procedure

- Select BPX file
- Select BPD file

- Click 'Download' and
- wait for 'Status' response (green for ok or red for error).

Upload to drive controller procedure

- Select BPX file
- Click 'Upload',

a file selection dialog for entry or selection of the BPD file to be created appears, a window for making a comment appears, then

wait for 'Status' response (green for ok or red for error).

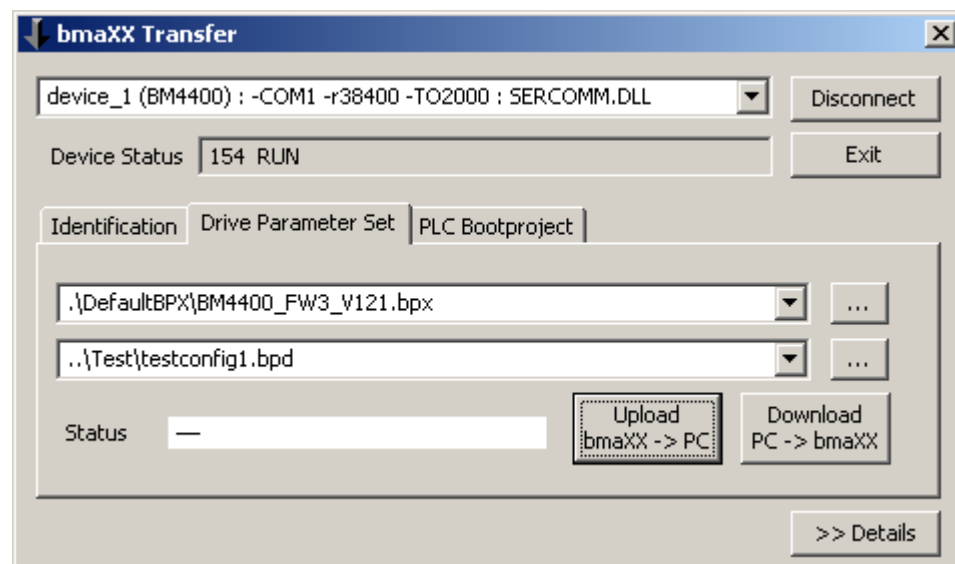


Figure 3: 'Drive Parameter Set' tab

'Complete parameterization' option

The expression 'complete parameterization' is assumed from WinBASS II and means that all parameters are set to default by the drive controller itself before a download and that both the parameters contained in the BPD (data file) and the BPX (parameter definition file) (i. e. their intersection) are then recorded with the download. This is significant if not all drive controller parameters are contained in the BPD and/or BPX, but only those required by the particular application.

The complementary 'partial parameterization' procedure is appropriate when the drive controller is already configured and only some of the parameters (e. g. optional transmitter module or positioning data sets) are required for downloading.

If complete downloads are carried out (complete BPX and complete BPD), the differentiation between 'partial parameterization' or 'complete parameterization' has no significance.

This option is accessible via two switches in the INI file:

```
HideDefaultsCheckbox=0
LoadDefaultsBeforeDownload=1
```

The 'HideDefaultsCheckbox' switch determines if an additional checkbox is shown on the screen allowing the user to make a decision about loading the default values.

The 'LoadDefaultsBeforeDownload' switch determines the start setting of the checkbox and if this is hidden, the behaviour during download.

The INI file default setting is 'partial parameterization':

HideDefaultsCheckbox=1	checkbox is hidden
LoadDefaultsBeforeDownload=0	no 'load default values'

'Download BPD files created with older versions' option

Drive controller parameter data (*.BPD files) can normally only be downloaded if the BPD file was created on a compatible drive controller. This requires agreement of 'LC Type' and 'Parameter Table Version (PTV)' of the two drive controllers. This is the case for all fully parameter compatible firmware versions of a device series (e. g. BM4400, change from FW 3.06 to FW 3.07: both have LC type=3 and PTV=83).

A new downward compatible firmware version may however contain newly added parameters. This is recorded numerically by the Parameter Table Version (e. g. BM4400, change from FW 3.07 to FW 3.08: LC type=3 stays the same, but PTV=83 changes to PTV=121).

For safe transfer of parameter data created with an older PTV, it is necessary to load the default values of all the parameters on the device ('complete parameterization'). This ensures that the downward compatible firmware behaves like the predecessor version. The subsequent download only records parameters compatible in the old and new PTV (e. g. they have the same ParameterKey). Newly added parameters retain their compatible default setting, since they are not included in the BPD.



NOTE

Find out if familiar parameters have become incompatible and if these parameters are of any concern for you, by comparing the old and new BPX or by asking the manufacturer!

Please also note that you can parameterize the drive controller with only one single BPD file when you are using this option. If you however want to parameterize your controller by means of successive download of several BPD files (e. g. first the basic_settings.bpd, then the motor_type_a.bpd or motor_type_b.bpd, then option_a.bpd or similar), the first downloads will be lost, because b maXX Transfer will load the default values every time a PTV discrepancy is detected before a download, resulting in deletion of the previous download. The 'AllowDownloadDifferentBPXWithoutDefaults' switch is available for such special cases (or for completely manual control via the checkbox 'load default values').

The 'Download BPD files with different PTV' option can be selected via switches in the INI file:

AllowDownloadDifferentBPX=1

AllowDownloadDifferentBPXWithoutDefaults=0

The basic setting of b maXX Transfer does not allow this option; i. e. parameter data (*.BPD files) can only be transferred if the source and target device have the same LC type and PTV specification.

b maXX Transfer always requires a parameter definition file (BPX file) that is compatible with the device. In other words: LC type and PTV specified for the device and in the BPX file must agree (cf however the 'Allow Compatible Drive Upgrade' option).

The entry 'ShowParamTableVersionAndType=1' in the INI file displays the two important identifiers (i. e. LC type and Parameter Table Version) normally required to conform (between device, BPX file and BPD file!), on the 'Drive Parameter Set' screen.

'Allow Compatible Drive Upgrade' option

The requirement referred to in the previous section, that the BPX file associated with the device always has to be used, may be a source of difficulties in practice. Consider for e. g. replacement of a device. This will normally contain a compatible development of the firmware originally used in the application and therefore include new parameters. If the new BPX file is not available, the 'AllowCompatibleDriveUpgrade' option will permit access to the replacement device using the original BPX and BPD files.

Prerequisites are equivalent LC type and compatible FW versions (e. g. 3.07 -> 3.08, but not 3.07 -> 4.2).

'Load default values' is carried out before the download procedure, unless this is specifically disabled (switch: AllowDriveUpgradeWithoutDefaults=1).

An upload procedure can also be carried out with this option. The created data files however only contain the values of the parameters defined in the BPX used and therefore not the complete set of parameters of the device. For this reason, 'b maXX Transfer' displays a warning when a BPD created in this manner is downloaded at a later stage.

The 'AllowCompatibleDriveUpgrade' option can be selected via switches in the INI file:

```
AllowDriveUpgrade=1
```

```
AllowDriveUpgradeWithoutDefaults=0
```

Transfer BPX files from WinBASS II

The required parameter definition files can be taken from a current WinBASS II since it contains all supported controller types and versions.

Go to %WinBASS-Installation_Directory%\OpcProjects\

The subdirectories for the particular device families are located there. The subdirectories of the firmware versions are located one level lower and these contain the Parameter Table Versions.

Example:

The file 'VarDef_V121.bpx' with the definitions of all the parameters of PTV 121 for BM44xx devices of firmware version 3.08 is located in the directory '%WinBASS-Installation_Directory%\OpcProjects\BM44\FW03\V121'.

The file 'VarDef_Ds1_V121.bpx' contains some of 'VarDef_V121.bpx' (the parameters of the data sets 2 to 8 are missing; data set 1 and all data set free parameters are included).

For use with b maXX Transfer, you can create copies of these files, rename them BM44xx_v3_121.bpx if necessary and e. g. save in %bmaXXTransfer_Directory%\Data\BPX\ . We recommend utilization of the complete definition file only.

The files 'Description_001_V121.bpt' and 'Description_049_V121.bpt' also included there contain the parameter names expressed as plain English or German text. In association with the compare function described in the following section, you can either use the English or German (or another translation if applicable) version of the file. It has to however be renamed to <bpx-file_name>.bpt.

'Prohibit upload deactivated data set parameters' option

Normally, b maXX Transfer reads all the defined parameters in the BPX file specified for an upload procedure and records these read values in the new created BPD file.

The scope of an upload (or a download) can be specified by selection of appropriately prepared BPX files (subsets containing only those parameters required by you specifically).

It is however often easier and safer to use a complete BPX file. You can still hide the majority of the unused parameters by skipping data sets not enabled in your device.

This option is accessible via a switch in the INI file:

```
BpdUploadOption1=1;    DataSetParameters from enabled data sets only
```

2.4 Comparison of b maXX drive controller parameter sets (BPD files)

This function is accessible via an additional 'Compare BPD' button on the 'Drive Parameter Set' screen. The button is normally hidden and can be enabled by making the following entry in the INI file:

HideButtonBpdCompare=0

The following dialog appears after clicking on the button:

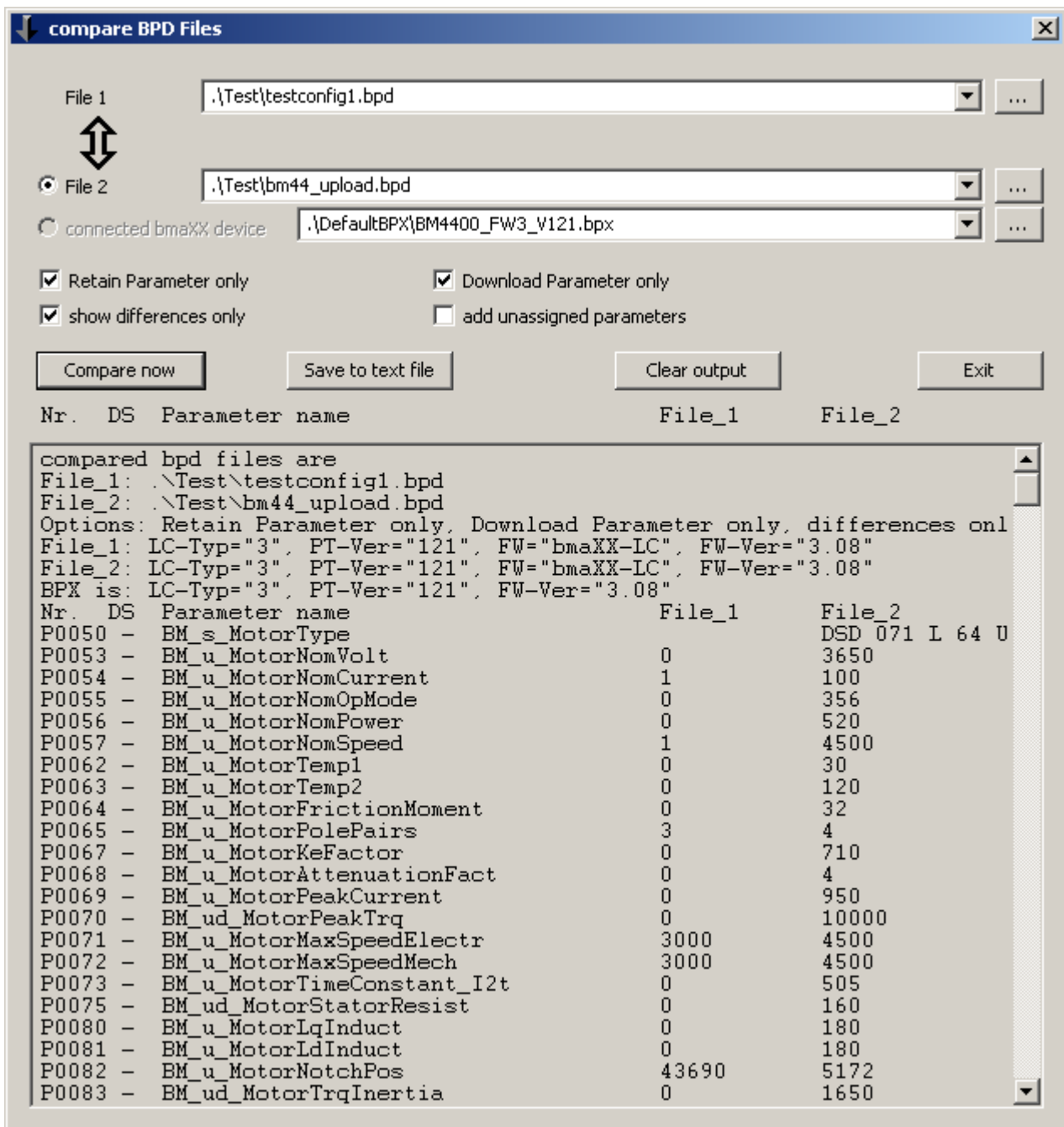


Figure 4: Compare BPD files

2.4 Comparison of b maXX drive controller parameter sets (BPD files)

Comparison takes place between two BPD files, which may originate from WinBASS, the integrated upload function ('Drive Parameter Set' tab) or one of the b maXX configurators.

If b maXX Transfer is currently connected to a b maXX drive, the radio button 'connected bmaXX device' is enabled. Activation of this button will result in an upload to a temporary file before comparison.

The two BPD files are compared on the basis of the specified BPX file.

This determines the scope of the parameters to be compared and provides parameter properties (e. g. Retain or Parameters only).

If you do not wish to compare all the parameters, simply adapt an original BPX file (supplied with WinBASS) by deleting the lines relating to the irrelevant parameters.

Internal units are used for representation of the values since the BPX file contains no scaling information.

The BPX file has to be compatible with at least one BPD file, i. e. 'Controller Type' and 'Parameter Table Version' have to be equivalent.

The BPD files may differ with regard to 'Controller Type' and 'Parameter Table Version'.

Allocation of parameters to each other takes place via the 'Parameter Key', a kind of unambiguous parameter identification number.

If the BPD files differ with regard to 'Parameter Table Version' (while 'Controller Type' is equivalent) the following may e.g. apply

- A parameter has been assigned a different address. This would be important for an upload or a download, but irrelevant for the compare procedure.
- A parameter has been assigned a different parameter number or a different name. Since the parameter key has not changed, they will be compared with each other. Parameter number and name from the BPX file are used in the table.
- A parameter may have gained a (compatible) extension (parameter number and name having remained the same). The key will change in this case, no allocation is made. The parameter for the BPD file that matches the BPX file is shown.

If the BPD files differ with regard to 'Controller Type', a more detailed knowledge of controller interrelationship is required:

e. g. are controller types 2 and 3 identical with respect to their parameters

e. g. can the parameters of controller types 1 and 2 (or 3) be allocated via their keys.

The comparison procedure can be controlled via options (e.g. 'Retain Parameter only'). An option to save as a text file is also available.



NOTE

The parameter names shown are initially obtained from the BPX file and may be in the form of inconvenient abbreviations (e. g. BM_ud_PPoSTarget2). These can be changed with the help of a BPT file. This has to have the same name as the selected BPX file and be located in the same directory. BPT files in German and English are supplied with WinBASS and only need to be renamed appropriately.

2.5 'PLC Bootproject' tab

This screen allows the transfer of SPS programs created with PROPROG wt II or ProProg wt III as bootprojects to the b maXX PLC (Bootproject Download).

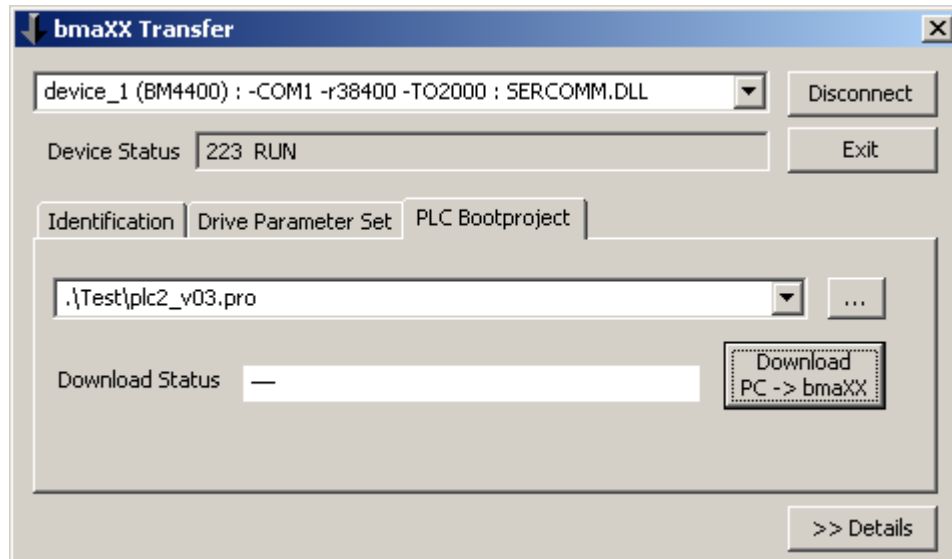


Figure 5:

The bootproject to be transferred (Files *.pro) has to be selected in the lower section of the combo box. An alternative file selection dialog can be opened with the button



Download to SPS procedure

- Selection or entry of boot project file name
- Click 'Download' and wait for 'Download Status' response (green for ok or red for error).

2.6 'PLC Bootproject' tab - optional additions

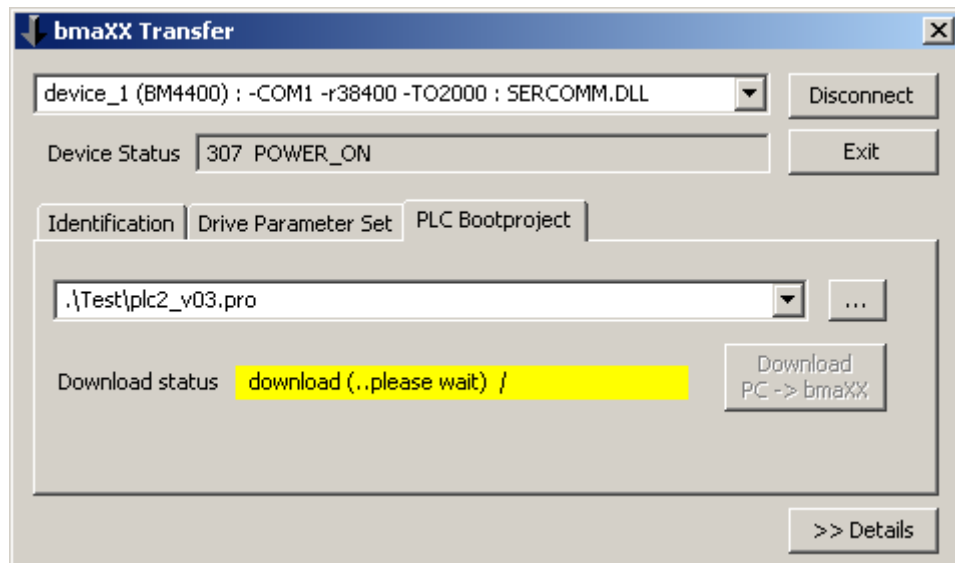


Figure 6:

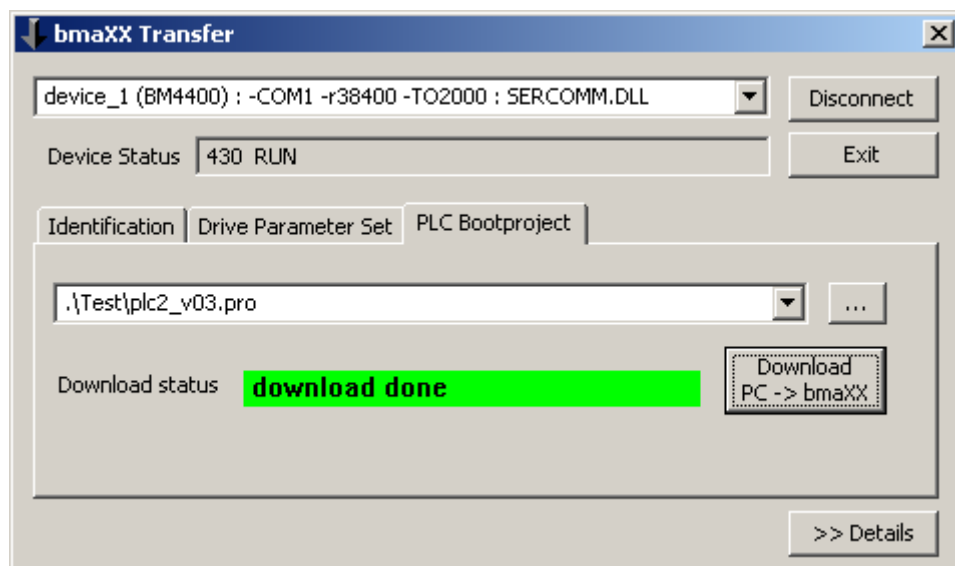


Figure 7:

2.6 'PLC Bootproject' tab - optional additions

The 'PLC Bootproject' tab can be supplemented by

- a 'Remove Bootproject from PLC' button
- an 'Upload bmaXX -> PLC' button
- a 'remanent memory' option field
- entry fields for start and end address of remanent memory

These optional elements may be enabled via the INI file (see section [>Configuration<](#) from page 25).

The standard status of these options is 'hidden'.

The following INI file entries e. g. result in the appearance shown in [▶Figure 8◀](#) :

```
HideButtonRemoveBootproject=1
HideButtonUploadBootproject=0
HideUpDownloadRetainData=0
SetUpDownloadRetainData=1
UpDownloadRetainDataStartAddr=10000000
UpDownloadRetainDataEndAddr=10057320
```

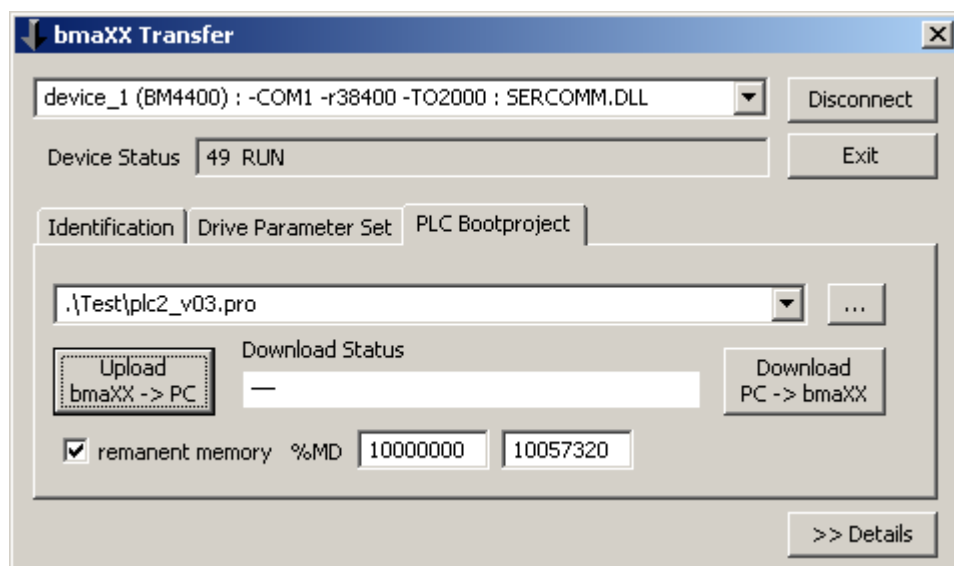


Figure 8:

The 'Remove Bootproject from PLC' button remains hidden, while the other options are visible.

The 'HideUpDownloadRetainData=0' option is a prerequisite for the 'SetUpDownload-RetainData' option.

Functionalities

The uploaded bootproject is saved in a file to be specified by the user (editable selection field, presetting by means of INI file possible).



NOTE

If a valid file name is specified in the selection field, the user is not prompted with a file selection dialog. An existing file is overwritten without request for confirmation!

Since this selection field is also used for download, it may happen that a file intended for downloading has been specified there. This file should therefore be classified as read only with a window file system write protection. Any accidental upload to this file will then be terminated.

An obviously invalid file name in the selection field opens the file selection dialog.

The name 'bootfile.pro' (standard in the PROPROG project) is also not mandatory here.

If the 'remanent memory' option was selected, this is saved in a file of the same name, file *.dat (in XML format).

The memory in the specified region is read. If this is not possible, e. g. because the re-manent memory is not set up in the project, the upload procedure is stopped on error and a *.dat file is not created.

The maximal region for current b maXX PLCs is %MD 10'000'000 - MD 10'057'320.

The highest address allocated by PROPROG can be determined during upload :

presetting '%MD 10'000'000 - -end-'.

This can be limited to the actually used region by means of the INI file and user input.

NOTE



The PLC is stopped before the upload starts without asking the user for confirmation.

The 'Stop' status is required for consistency of the remanent memory among other things.

There is an option for automatic generation of the name of the bootproject to be created (derived from the device name). The switch is called 'AutoBuildUploadFileNameForBootprj=1'. The directory for the bootproject files to be created is specified as 'AutoBootprj-Folder=..\test_data\PRJ', which would be the subdirectory 'test_data\PRJ' in the example. It has to exist.

For download, the user is required to select or edit the file for the bootproject as before. A presetting can be specified by means of the INI file or the button



The name of the file with the data of the remanent memory is derived automatically from this.

The files for bootproject and remanent memory have to be located as a pair in the same directory, if the remanent memory is also to be recorded during download (option filed and address range).

The remanent memory is recorded after download of the bootproject, activation and cold start. The PLC Run-Stop switch has to be set to RUN for this purpose.

**NOTE**

The first run of the just loaded bootproject takes place without the remanent memory values. A reboot may therefore be necessary after the remanent memory data is written.

**NOTE**

Remanent memory is only readable/writable when set up in the (loaded) project. This is the case if the files for the bootproject and the remanent data originate from the same upload and this project was also loaded by the PLC during upload.

The 'Remove Bootproject from PLC' button deletes the bootproject in the remanent memory (Flash EEPROM) of the SPS. The program loaded in the RAM remains intact at this stage. After switching the SPS off and back on, the PLC remains without a program in the 'On' state = delivery condition.

It is however unnecessary to delete the bootproject before transfer of a new bootproject to the SPS.

'Download Multiple Devices' option

If one and the same bootproject is to be transferred to several devices (PLCs), this can be automated by means of a 'Transfer List' (see [▶'Transfer List' tab◀](#) from page 21). The following is a simpler option:

If the checkbox 'multiple' under the 'Download' button is checked additionally, a list of the known (preset in the uppermost combo box) devices(communication connections) is shown. The user selects the required devices and starts download of this particular bootproject by clicking.

This option is accessible via a switch in the INI file:

```
HideBootfileDownloadMultiple=0
```

Accidental selection errors can be avoided by means of the switch:

```
BootfileDownloadMultipleCheckPrefix=3
```

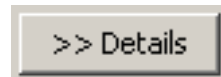
If this is enabled, the name of the file for downloading (with the bootproject) and the name of the device selected from the communication connections have to have the same prefix (the first three characters have to match in this example).

This option cannot be used in conjunction with the 'HideButtonRemoveBootproject=0' option.

2.7 'Details' option

This optional function is generally only required for troubleshooting.

The button



displays a report window.

The text can be copied to the clipboard by selection with the mouse and copy (e. g. Ctrl-Insert).

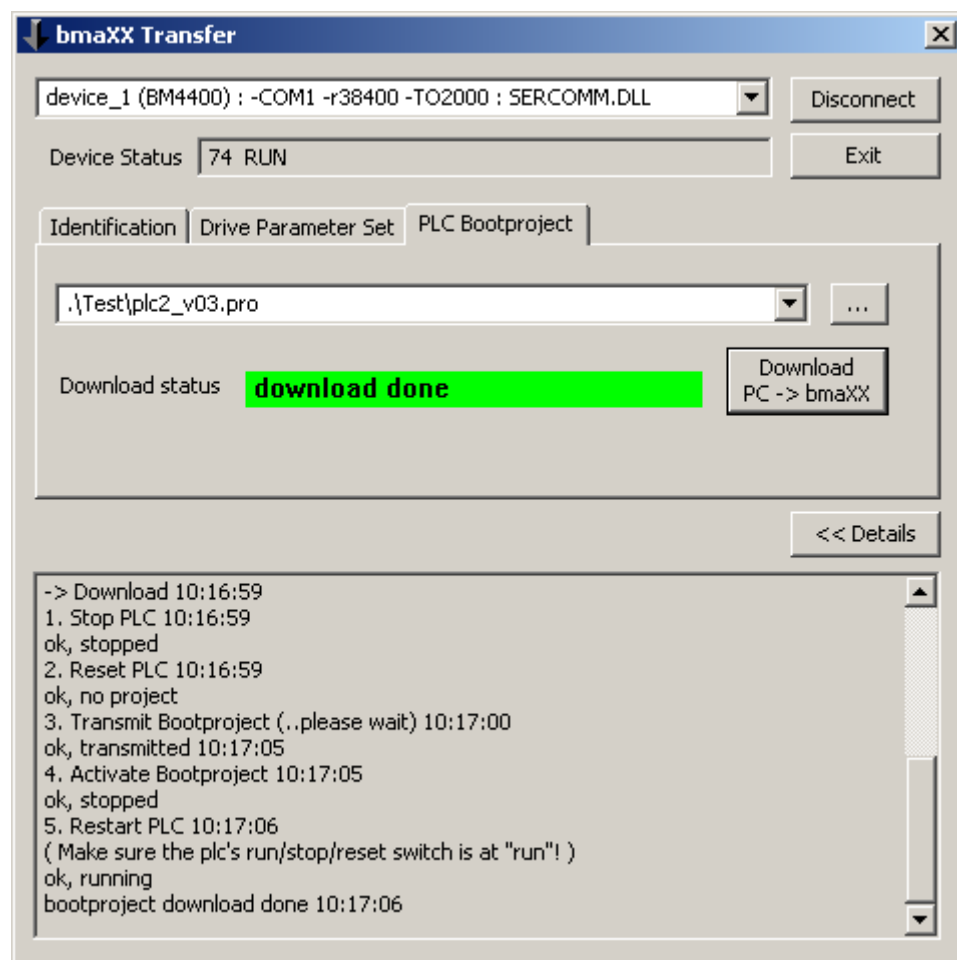


Figure 9:

2.8 'Transfer List' tab

The 'Transfer List' tab allows the transfer of bootproject(s) and controller data set(s) to several devices in one action.

This multiple download procedure is based on a 'Transfer List' : an ASCII file, which lists various devices with their communication settings and the files to be transferred to them (see [▶Figure 10◀](#) 'Processing a Transfer List').

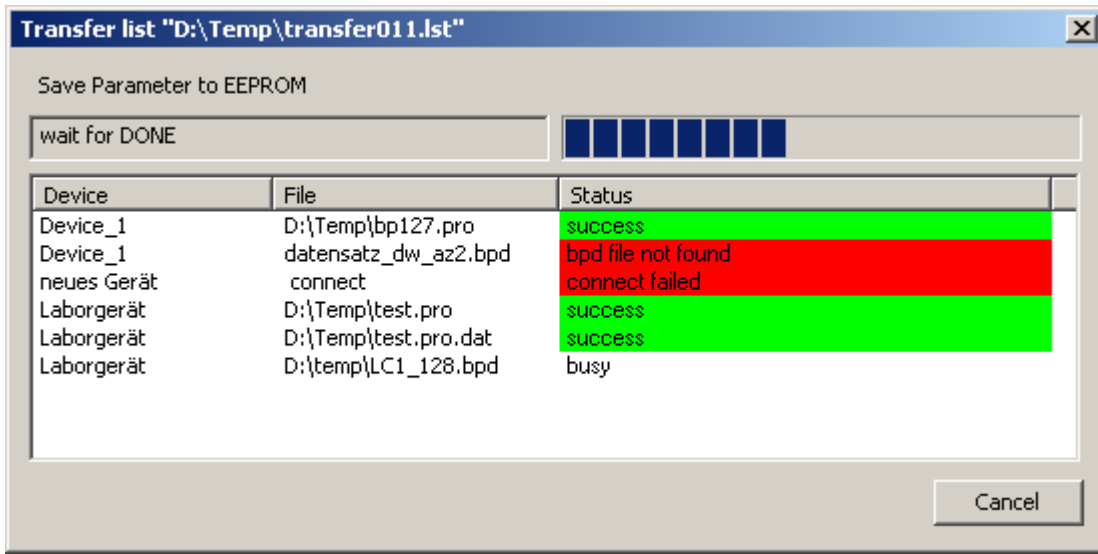


Figure 10:

The end user selects such a Transfer List in the familiar manner, starts it (cf [▶Figure 11◀](#)), gets a feedback message during the procedure as shown in [▶Figure 10◀](#) and a summary message at the end of the complete transfer as shown in [▶Figure 11◀](#).

A report file is also created for each transfer, which is accessible via the 'Show Transfer Reports' button.

2.8 'Transfer List' tab

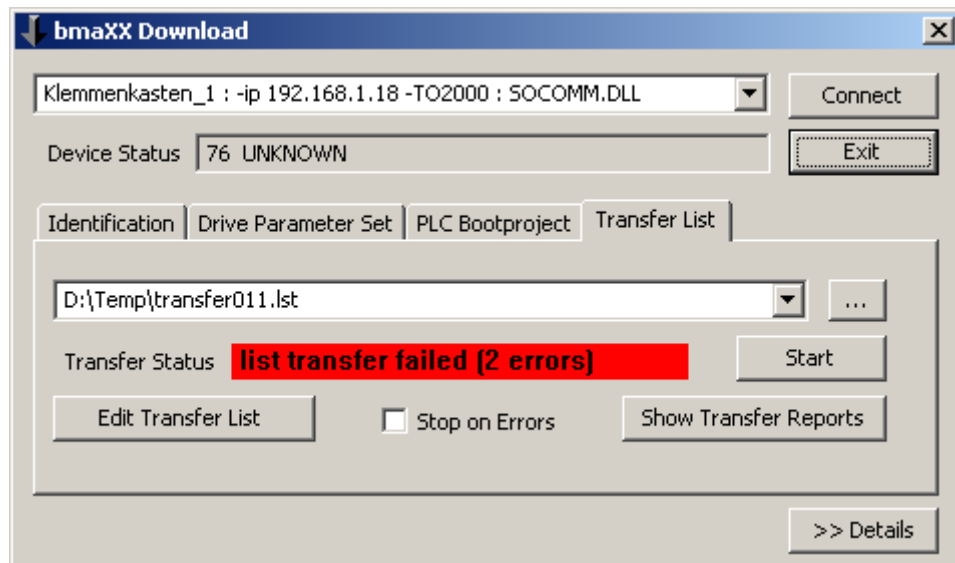


Figure 11:

The 'Edit Transfer List' button is available for editing a transfer list (optional).

When a new transfer list is created (also with the 'Edit Transfer List' button, preceded by deletion of the transfer list name in the combo box), the devices (and the communication paths to them) are adopted from the 'Device Selection' combo box (..top left in [▶Figure 11◀](#)). This list is defined by means of the INI file and can therefore not be changed by the regular user. The files for downloading can be selected in the edit window, see [▶Figure 12◀](#).

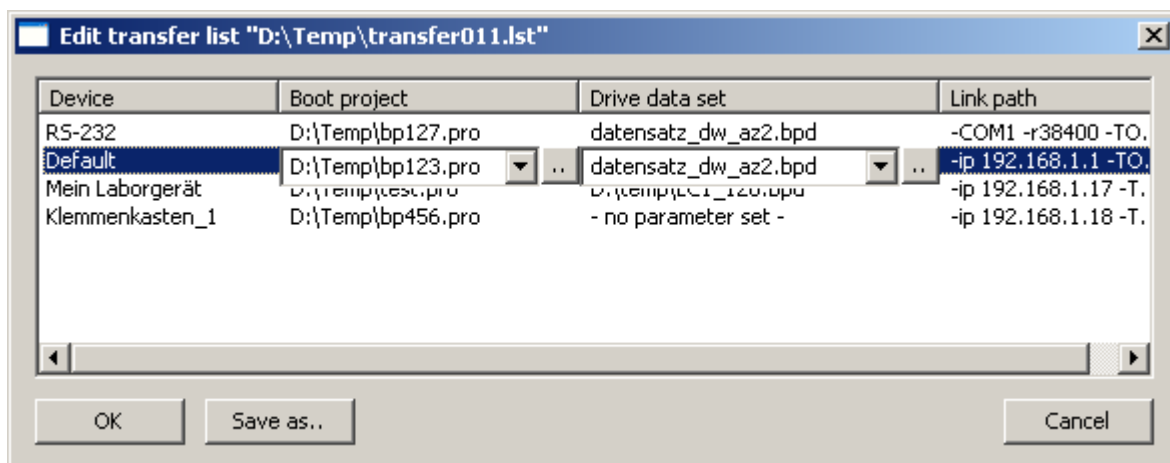


Figure 12:

The **BPX files** required for downloading a **Drive data set** are determined automatically; the directory with the BPX files to be used has to be specified in the INI file for this (entry: AutoBpxFolder=%My_BPX_Path%).

The BPX file to be used can alternatively be entered manually in the transfer list (ASCII editor). This explicit entry refers to the particular BPD file and has priority over an automatic determination.

A compatible BPX file is finally searched for in the directory of the particular BPD file.

The automatic search procedure stops with the first suitable BPX file.

It is recommended to avoid ambiguities due to shortened BPX files by using a different directory for these. (The complete BPX files are generally advisable for downloads. You can then be sure that all the parameters contained in the BPD are actually downloaded.)

In addition to **bootprojects**, associated **Remanent Variables** are also transferred, provided the relevant file is available.

Example: If the bootproject 'D:\data\bp123.pro' is specified in the list and the file 'D:\data\bp123.pro.dat' is found, the remanent variables are recorded automatically after downloading the bootproject.

If two PLCs are to receive the same bootproject but different remanent variables, a copy of the bootproject file has to be made (the bootproject file is renamed, the bootproject contained retains its name!). Both bootproject files contain the same bootproject. The associated, variable files with the same names contain the required differing information.

A report is available in the same directory after a list download.

e. g. D:\temp\transfer_01.lst -> D:\temp\transfer_01_report_<<date_time>>.txr

Alternatively, a separate directory can be specified in the INI file ('TransferListReportFolder' entry).

You also have to make use of this option if you keep your download data on a CD-ROM.

If the report file cannot be written to the directory/ies, it will be saved in the temp directory of the operating system and overwritten with every new transfer.

The entire 'Transfer List' tab and the partial function 'Edit Transfer List' can be hidden by entries in the INI file ('HidePageTransferList', 'HideButtonEditTransferList').

Transfer list example:

```
<TransferList ver="1.0">
  <Device name="RS-232" com="-COM1 -r38400 -TO2000 : SERCOMM.DLL">
    <Prj>D:\Temp\bp127.pro</Prj>
    <Bpd>data_set_dw_az2.bpd</Bpd>
    <Bpx></Bpx>
  </Device>

  <Device name="Default" com="-ip 192.168.1.1 -TO2000 : SOCOMM.DLL">
    <Prj>D:\Temp\bp123.pro</Prj>
    <Bpd>data_set_dw_az2.bpd</Bpd>
    <Bpx></Bpx>
  </Device>
```

2.8 'Transfer List' tab

```
<Device name="Lab_device" com="-ip 192.168.1.17 -TO2000 : SOCOMM.DLL">
  <Prj>D:\Temp\test.pro</Prj>
  <Bpd>D:\temp\LC1_128.bpd</Bpd>
  <Bpx></Bpx>
</Device>

<Device name="Terminal _box1" com="-ip 192.168.1.18 -TO2000 : SO-
COMM.DLL">
  <Prj>D:\Temp\bp456.pro</Prj>
  <Bpd>- no parameter set -</Bpd>
  <Bpx></Bpx>
</Device>

</TransferList>
```


3

CONFIGURATION

The program can be configured by means of an INI file as shown below.

This contains many configuration switches referred to in the earlier sections, which should generally be self-explanatory on the basis of their names. It also contains presettings for the diverse combo boxes for communication paths and files (Sections [Comm-Paths], [Bootproject-Files], [BPX-Files] etc). These can be supplemented optionally during usage, see switches 'Add?????Allowed'.

These additions made during usage are not saved in the INI file anymore, but in a SET file (newly introduced with version 1.6) of the same name.

If the INI file is missing in the tool directory, 'b maXX Transfer' will create a new one, with all supported switches and associated default settings.

[General]

Caption=bmaXX Transfer

PlacIdentPageToRight=0

HidePageDriveParameter=0

HidePageBootproject=0

HidePageFlashfiles=1

HidePageTransferList=1

AddCommpathAllowed=1

AddBootfilesAllowed=1

AddBpxfilesAllowed=1

AddBpdfilesAllowed=1

AddTxlfilesAllowed=1

RememberFolders=1

; Page Drive Parameter

HideButtonBpdUpload=0

HideButtonBpdCompare=1

ShowBPDContentBeforeDownload=1

ShowResultAfterDownload=1
AllowDownloadDifferentBPX=0
AllowDownloadDifferentBPXWithoutDefaults=0
AllowDriveUpgrade=0
AllowDriveUpgradeWithoutDefaults=0
SaveParameterAfterDownload=1
TimeOutSaveDriveParameter=0 ; use default
AutoBpxFolder=
DisableBpxSelectionWhenAutoBpxFound=0
ShowParamTableVersionAndType=0
CheckPwtSysError=1; see in LC2 manual P0203, P0251
AllowSavingOnPwtSysError=0; when PwtSysError check failed - the user will be asked
BpdUploadOption1=0; DataSetParameters from enabled data sets only
HideDefaultsCheckbox=1
LoadDefaultsBeforeDownload=0
; Page Bootprojects
TimeOutRestartPlc_sec=0
TimeOutActivateBootProject_sec=0
HideButtonDownloadBootproject=0
HideButtonRemoveBootproject=1
HideButtonUploadBootproject=1
HideUpDownloadRetainData=1
SetUpDownloadRetainData=0
UpDownloadRetainDataStartAddr=10000000
UpDownloadRetainDataEndAddr=10057320
AutoBuildUploadFileNameForBootprj=0
AutoBootprjFolder=
HideBootfileDownloadMultiple=1
BootfileDownloadMultipleCheckPrefix=0
; Page TransferList
HideButtonEditTransferList=0
HideButtonShowTransferListReports=0
TransferListReportFolder=
TransferListStopOnError=0
[File Selection Dialog Start Folder]
FolderReadBootprj=..\Test_data\PLC\
FolderWriteBootprj=D:\TEMP
FolderReadBPX=..\Test_data\BPX\

```
FolderReadBPD=..\Test_data\BPD\  
FolderWriteBPD= D:\TEMP  
FolderTransferlist=  
FolderReadLinklistfiles=  
[Comm-Paths]  
device_1 (BM4400) : -COM1 -r38400 -TO2000 : SERCOMM.DLL  
device_2 (BM4400) : -ip 192.168.1.17 -TO2000 : SOCOMM.DLL  
device_3 (BM2300) : -COM1 -r9600 -TO4000 : SERCOMM.DLL  
[Bootproject-Files]  
..\Test_data\PLC\RES1_001.pro  
..\Test_data\PLC\RES1_002.pro  
[BPX-Files]  
..\Test_data\BPX\BM44xx_V083.bpx  
..\Test_data\BPX\BM44xx_V121.bpx  
[BPD-Files]  
..\Test_data\BPD\basic_setting.bpd  
..\Test_data\BPD\drive01_v001.bpd  
..\Test_data\BPD\drive02_v001.bpd  
..\Test_data\BPD\drive03_v001.bpd  
[TXL-Files]
```

3.1 Explanation of INI file entries

Section [General]:

The 'Caption=bmaXX Transfer' entry sets the title line of the main window, the messages and the windows task bar. The program icon cannot be changed.

The 'PlacIdentPageToRight=1' entry sets the 'Identification' tab in the background and to the right when the program starts.

'HidePage?????=1' entries hide the particular tabs.

'Add????filesAllowed=1' entries relate to the diverse combo boxes and their presets in the sections [Comm-Paths], [Bootproject-Files], [BPX-Files], [BPD-Files], [TXL-Files] at the end of the INI-file. If the relevant switch is set, the files created/selected in the course of the last session (buttons '...' to the right of the combo boxes) are added from the SET file.

The 'RememberFolders=0' entry relates to [File Selection Dialog Start Folder] section. The path entries from this section in the INI file initially determine how the particular file selection window opens. If there is no entry, the file currently specified in the combo box determines the start directory of the file selection window. A switch setting 'Remember-Folders=1' will inform 'b maXX Transfer' about the directories last selected by the user,

saving them in the SET file and loading them during the next program start. The INI file entries will therefore be invalid.

; Page Drive Parameter

- cf. [▷'Drive Parameter Set' tab](#) from page 8 and [▷Comparison of b maXX drive controller parameter sets \(BPD files\)](#) from page 13.

'HideButton?????=1' entries hide the relevant button.

The 'HideButtonBpdUpload=1' hides the 'Upload bmaXX->PC' button

The 'ShowBPDContentBeforeDownload=1' entry displays a message with information about the data set to be downloaded and a cancel option.

The 'ShowResultAfterDownload=1' option displays an explicit message at the end of the download procedure, which requires confirmation. The message will also appear in case of error even if the option is disabled.

The 'SaveParameterAfterDownload=0' entry prevents that the controller parameters loaded to the RAM are saved immediately. The downloaded parameter settings are lost once the device is switched off.

The 'TimeOutSaveDriveParameter=0' entry determines utilization of the default value for time monitoring during saving to the EEPROM. A time can be specified in seconds alternatively.

The 'AutoBpxFolder=.\DefaultBPX' entry specifies a directory ('.\DefaultBPX' here), in which the tool automatically searches for a compatible BPX file after a connect. Before that, the currently set BPX file is however tested and retained if appropriate.

'DisableBpxSelectionWhenAutoBpxFound=1' can also be used to prevent selection of a different BPX file by the user.

The 'ShowParamTableVersionAndType=1' entry shows the two decisive identifiers (LC Type and Parameter Table Version) on the 'Drive Parameter Set' screen, which have to match for download (between device, BPX file and BPD file!).

[▷Figure 13](#) is an image showing the last three options referred to.

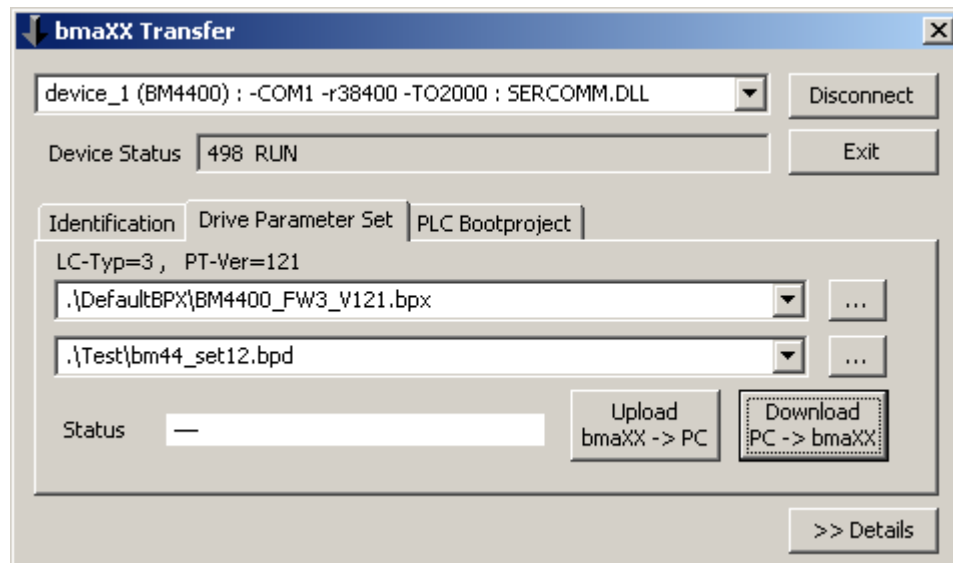


Figure 13:

; Page Bootprojects

- cf. [▶'PLC Bootproject' tab](#) from page 15 and [▶'PLC Bootproject' tab - optional additions](#) from page 16.

'HideButton?????=1' entries hide the relevant button.

'TimeOut????_sec=0' entries set the default value for the particular monitoring time. A time can be specified in seconds alternatively.

The entries

```
HideUpDownloadRetainData=1
SetUpDownloadRetainData=0
UpDownloadRetainDataStartAddr=10000000
UpDownloadRetainDataEndAddr=10057320
AutoBuildUploadFileNameForBootprj=0
AutoBootprjFolder=
HideBootfileDownloadMultiple=1
BootfileDownloadMultipleCheckPrefix=0
```

are explained in [▶'PLC Bootproject' tab - optional additions](#) from page 16 .

; Page TransferList

- cf. [▶'Transfer List' tab](#) from page 21.

'HideButton?????=1' entries hide the relevant button.

The report file for a 'List Transfer' is normally saved in the list file directory or in the one specified by 'TransferListReportFolder'.

3.1 Explanation of INI file entries

The [File Selection Dialog Start Folder] section contains path entries for the relevant start directory of the particular file selection window. Please also refer to the entry 'Remember-Folders=0' above.

Please also refer to the information provided above relating to the other sections.

4

B MAXX TRANSFER VERSIONS

Information about the version number of the 'b maXX Transfer' tool is available

- from the Info window (right click on the caption line of the main window, menu selection point 'About')
- in Windows Explorer, context menu of the 'bmaXXTransfer.exe' file (right mouse click), entry 'Properties', tab 'Version'.



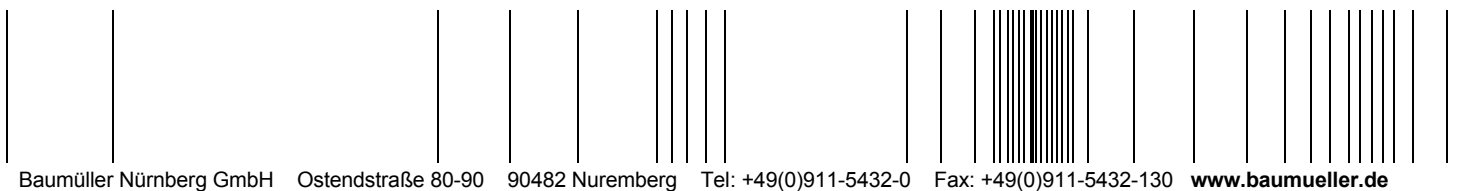


Index

A	
Allow Compatible Drive Upgrade	11
B	
bmaXXTransfer.exe	7
BPD (data file)	9
BPD file	8
compare	13
Download with different PTV	10
older versions	10
BPX (parameter definition file)	9
BPX file	8
from WinBASS II	11
C	
Compare BPD	13
Complete parameterization	9
D	
Details	20
Download	8
Download to SPS	15
Drive controller parameter sets	8
E	
Establish a connection	7
F	
Functionalities	17
I	
INI file	5, 8, 16, 25
Installation	5
P	
Partial parameterization	9
PLC Bootproject	15
optional additions	16
PTV (ParameterTableVersion)	10
R	
Remanent Variable	23
Replacement devices	11
T	
Tab	
Drive Parameter Set	8
Identification	8
Transfer List	21
U	
Upload	8



be in motion



All the information in these Operating Instructions is non-binding customer information; it is subject to ongoing further development and is updated on a continuous basis by our permanent change management system. Note that all the data/numbers/information that are quoted are current values at the time of printing. This information is not legally binding for dimensioning, calculation and costing. Before using the information listed in these Operating Instructions as the basis for your own calculations and/or applications, make sure that you have the latest most current information. This means that we accept no responsibility for the accuracy of the information.